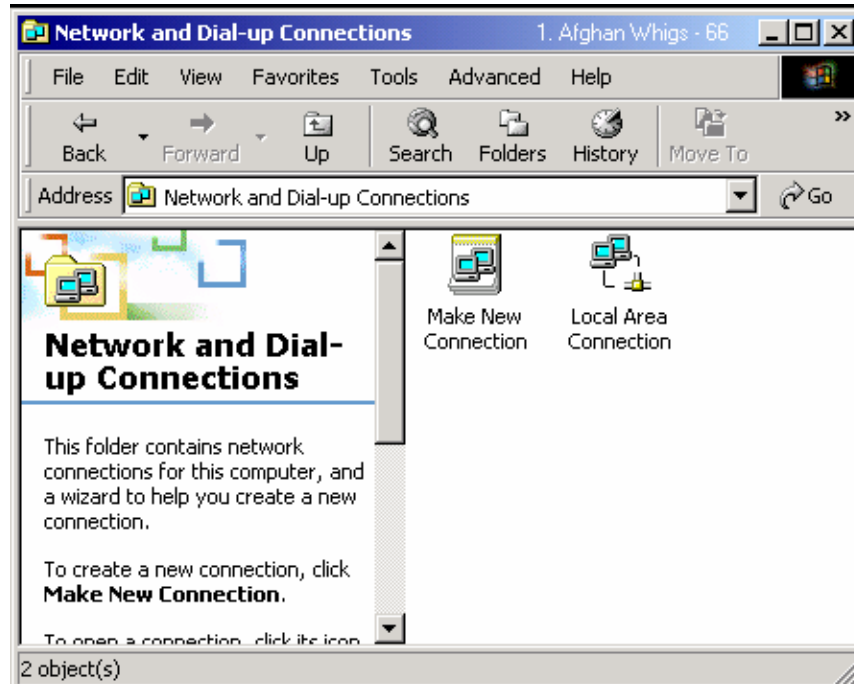


Windows 2000 Professional Dial Up Configuration

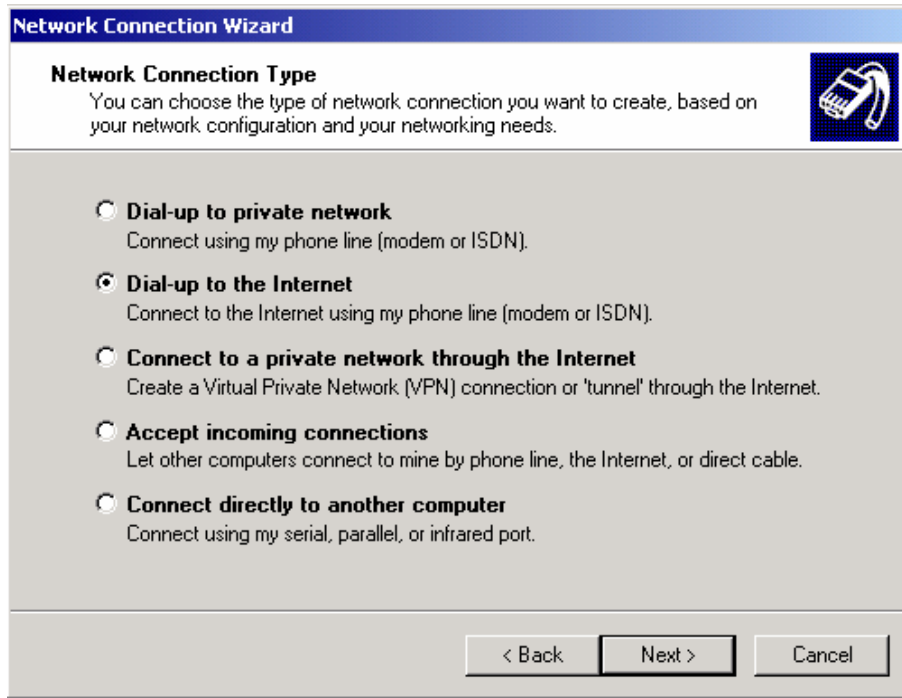
- 1) Double-click “My Computer” on your desktop.
- 2) Double-click on the “Control Panel” icon.
- 3) Double-click on the “Network and Dial-up Connections” folder.
- 4) You should now see the following:



- 5) Double-click on “Make New Connection” and the following Screen will appear:

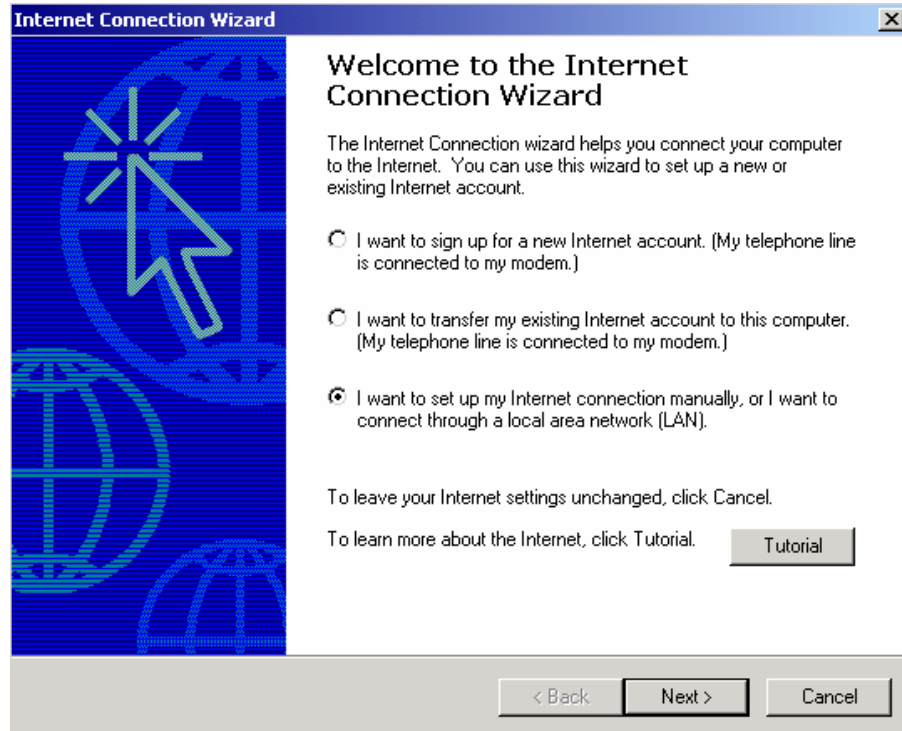


6) Click “Next” and that will bring up the following screen:



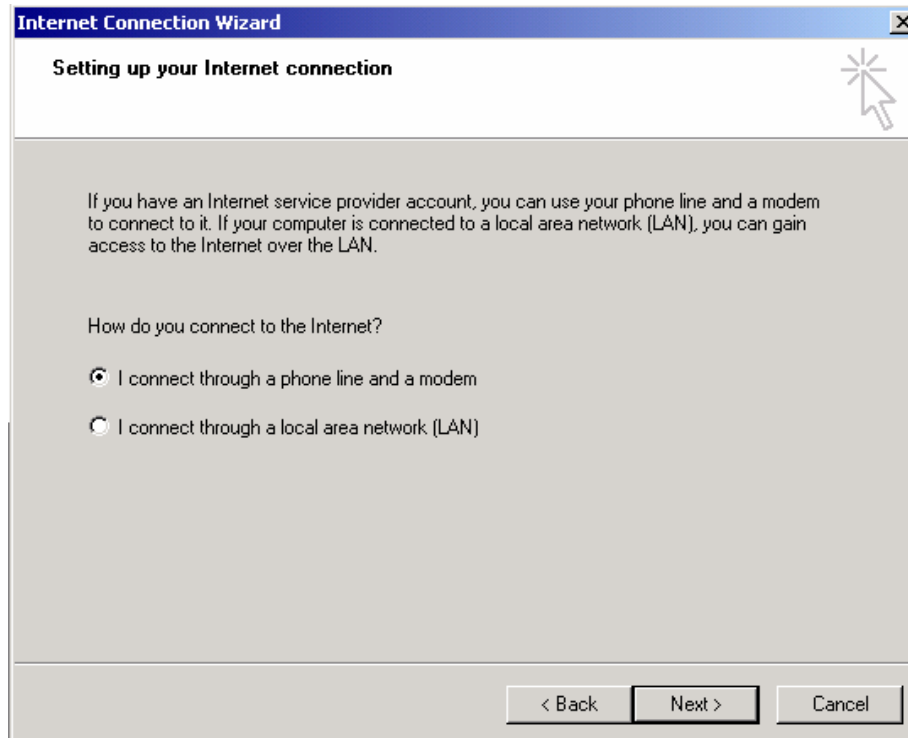
7) Choose “Dial-Up to the Internet” and then click “Next”.

8) After you click “Next” the following window will appear:



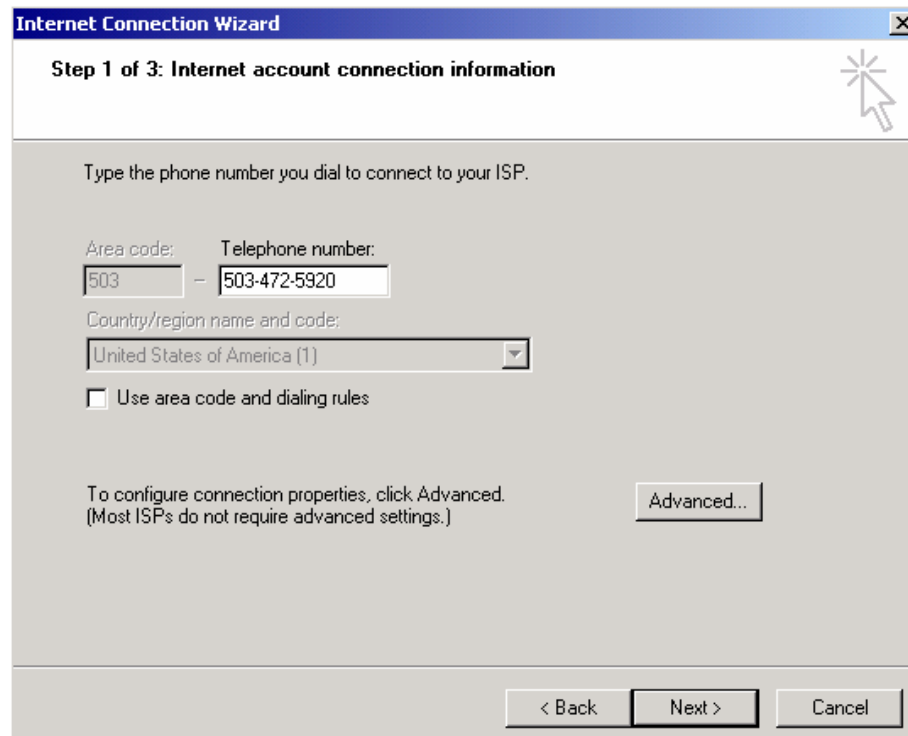
9) Choose the third option or the option implying manual configuration of the dial-up connection.

10) Choose “Next” and the following screen will appear:



11) Select “I connect through a phone line and a modem”.

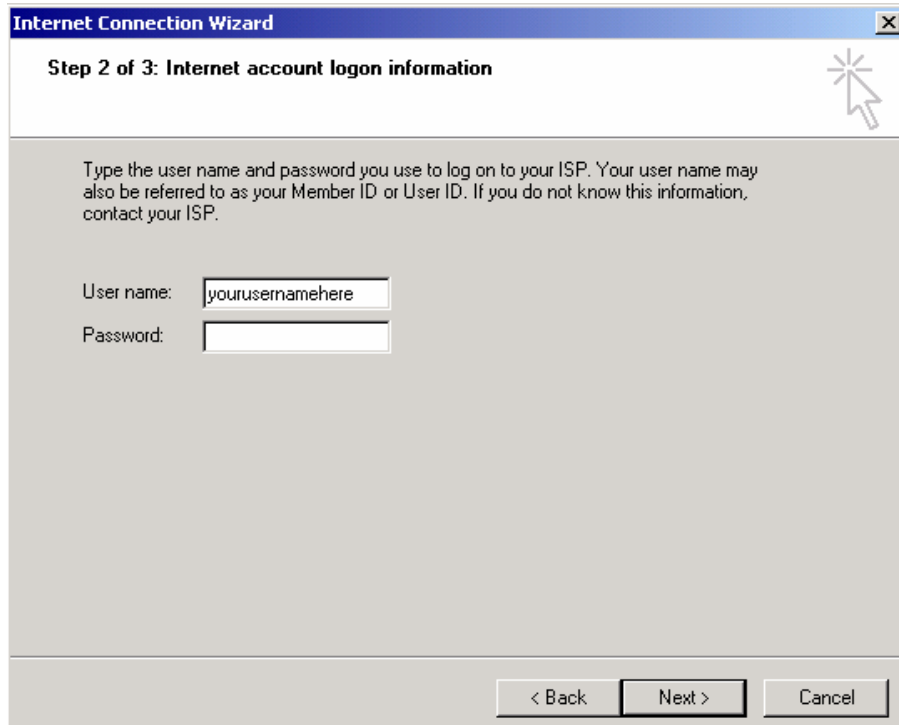
12) Choose “Next” and the following Window will appear:



13) DESELECT “Use area code and dialing rules” by clicking on it. (The checkmark should be gone.)

14) Then, to be in compliance with 10-digit dialing, type in the following number “503-472-5920”.

15) Ignore the advanced button; continue on by clicking “Next”. The following window will appear:

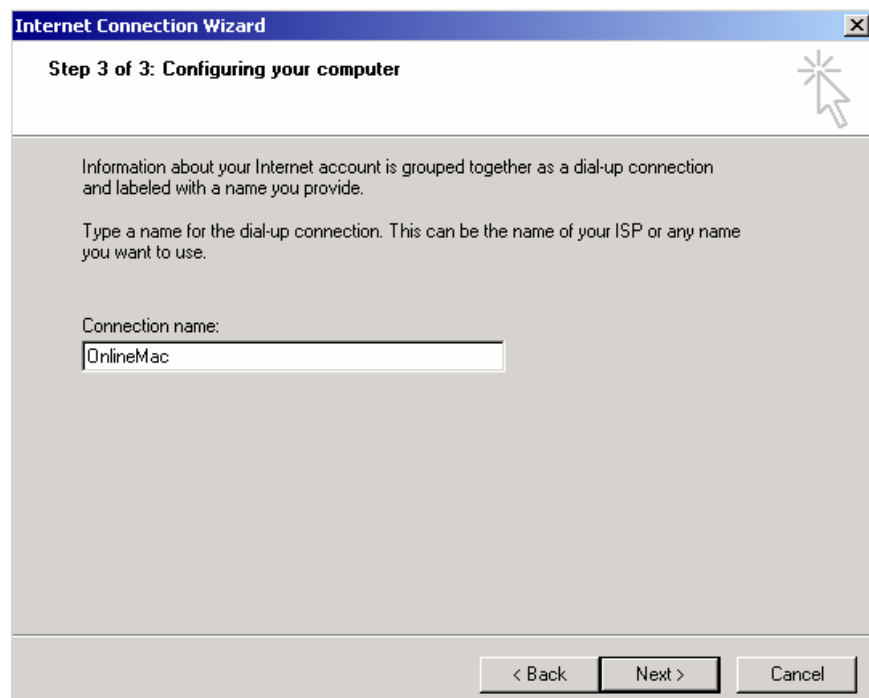


16) Type in the Username and Password. *Now you will not be prompted to give a password later.*

OR

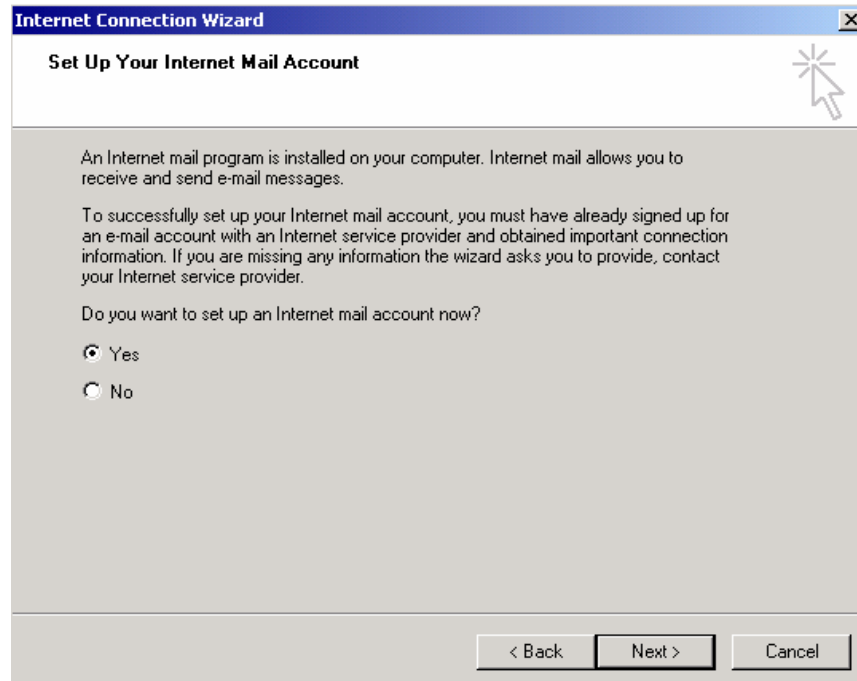
Type the username only. *Now your email will be password protected.*

17) Click “Next” and the following screen will appear:



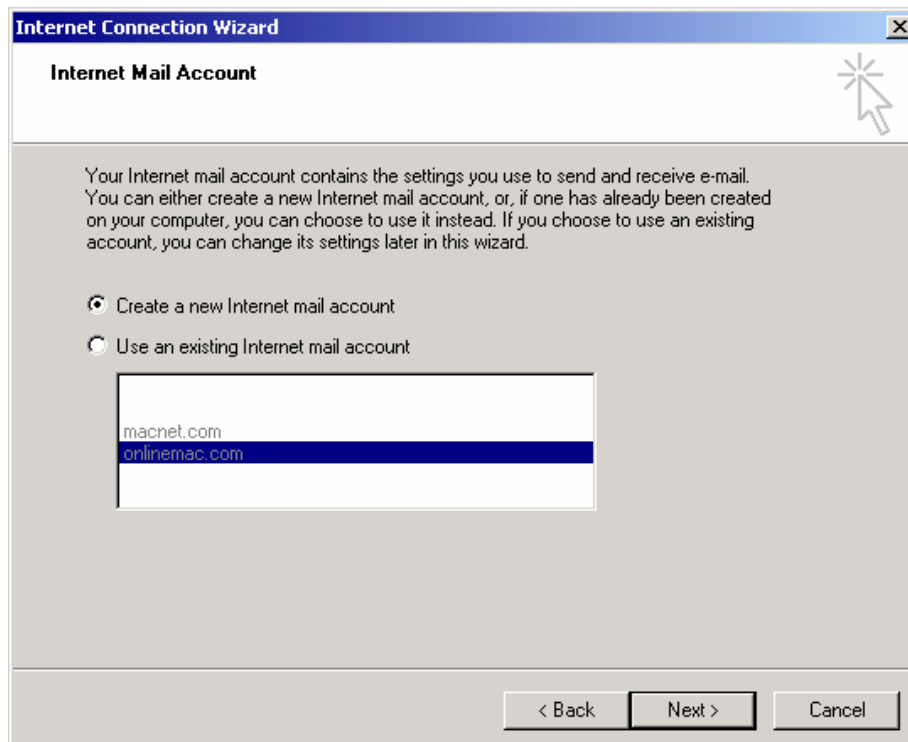
18) Name the connection “OnlineNW”.

19) Click “Next” and the following screen will appear:



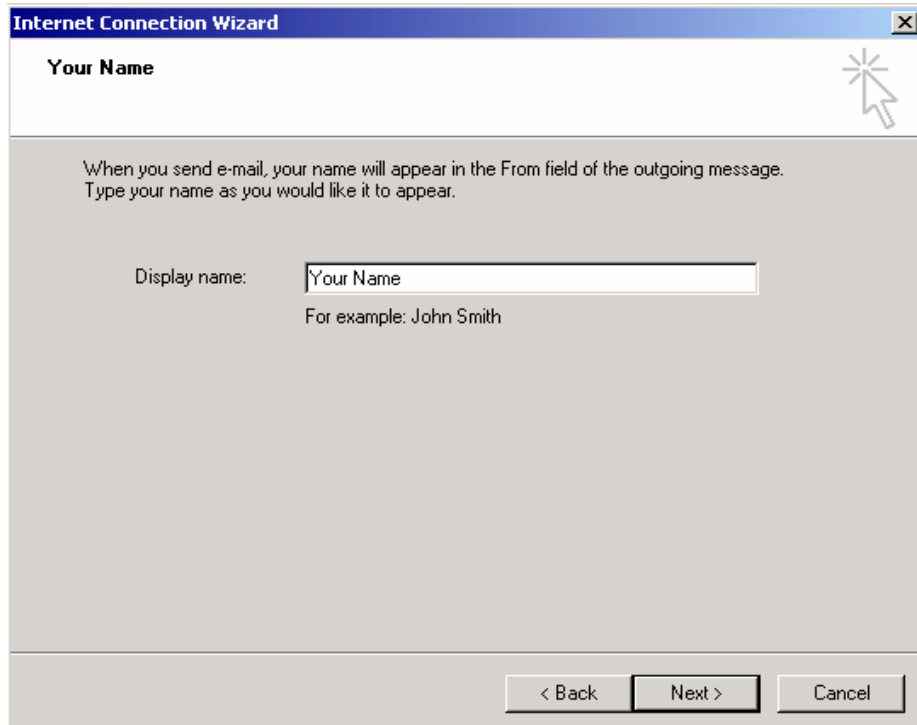
20) If this is a new setup of W2K, the best idea is to configure the mail through the wizard as well. Choose “Yes”.

21) Click “Next” and you will see this screen.



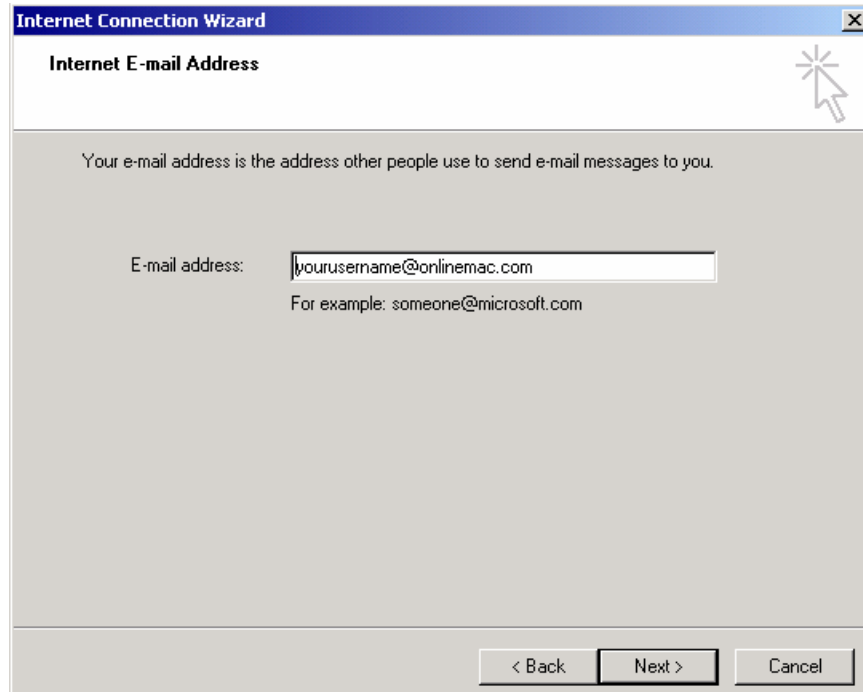
22) Choose “Create a new internet mail account”.

23) Click “Next” and the following screen will appear:



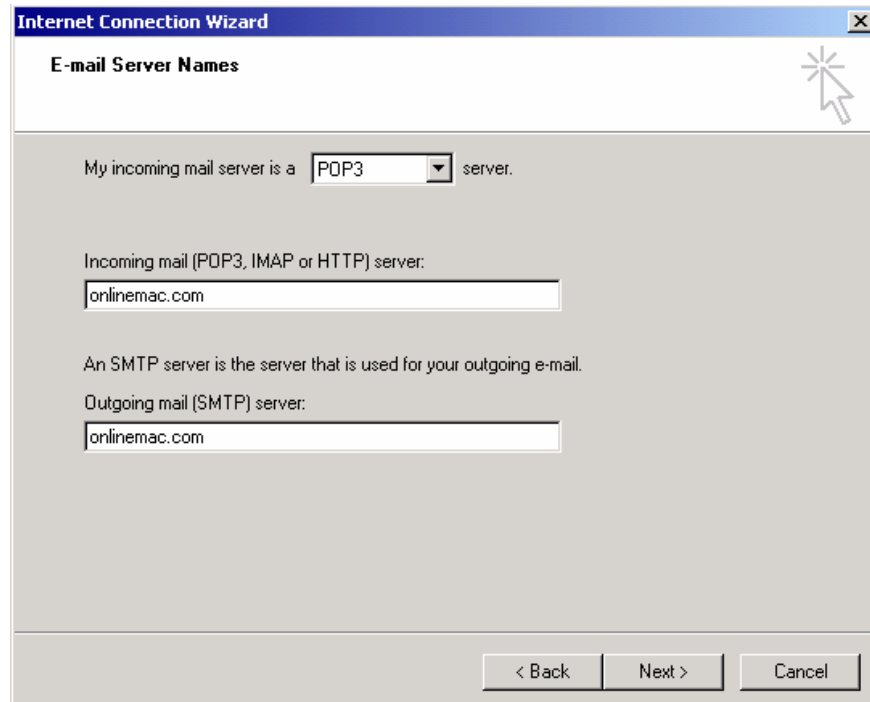
24) Type in your name or whatever you would prefer to appear on the “From” line.

25) Click “Next” to proceed onto the following screen:



26) Type your email address.

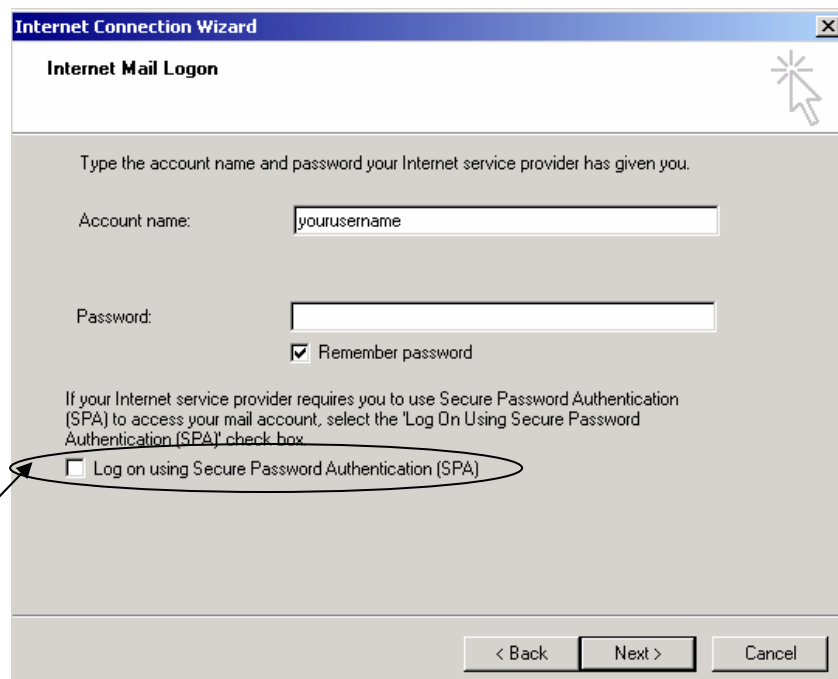
27) Click “Next” to proceed to the next screen as seen below:



28) Choose “POP3” from the list in the field box for “My incoming mail server is a_____server.”

29) Type “OnlineNW.com” in both the “Incoming Mail Server” and “Outgoing Mail Server” fields.

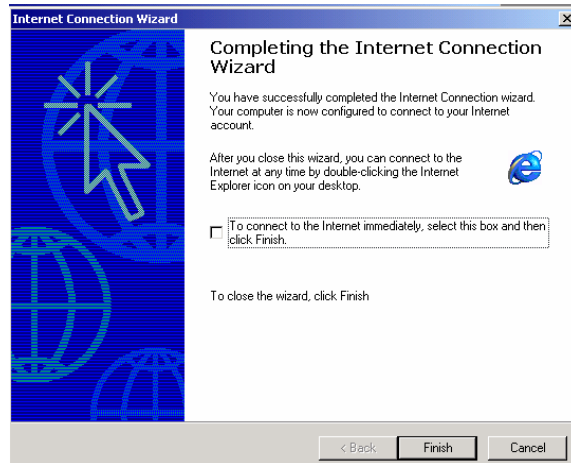
30) Click “Next” to proceed to the next screen as seen below:



31) Type your user name (i.e. jdoe) in the “Account name” field.

32) ***DO NOT*** check the “Log on using Secure Password Authentication [SPA].”

33) Click “Next” and continue on to the following screen:



34) DESELECT “To connect to the Internet immediately...” There are still a few more steps before your configuration is complete.

35) Click “Finish.”

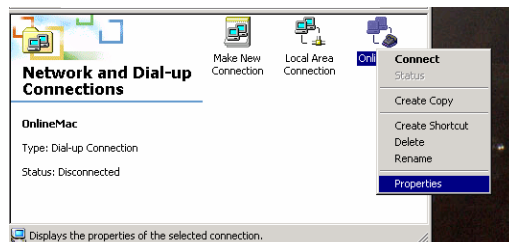
36) Double-click the “My Computer” icon on your desktop.

37) Double-click on the “Control Panel” icon.

38) Double-click on the “Network and Dial-up Connections” folder.

39) **Right** click on the newly created “OnlineNW” icon.

40) The following should appear:



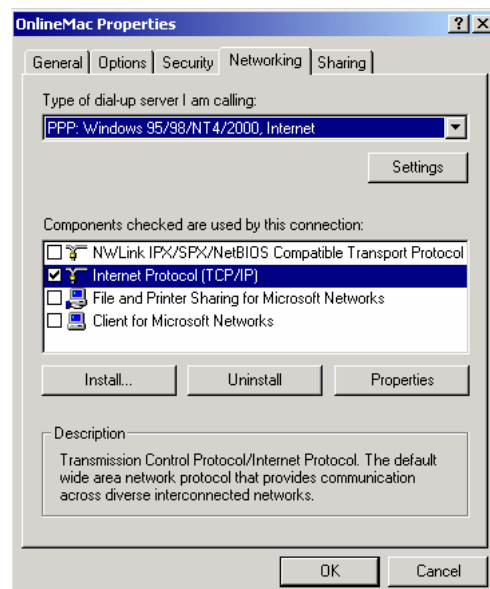
41) Move the cursor down and **left** click on “Properties”.

42) Once the “Properties” window is open, proceed to the “Networking” tab and the window to the right should appear.

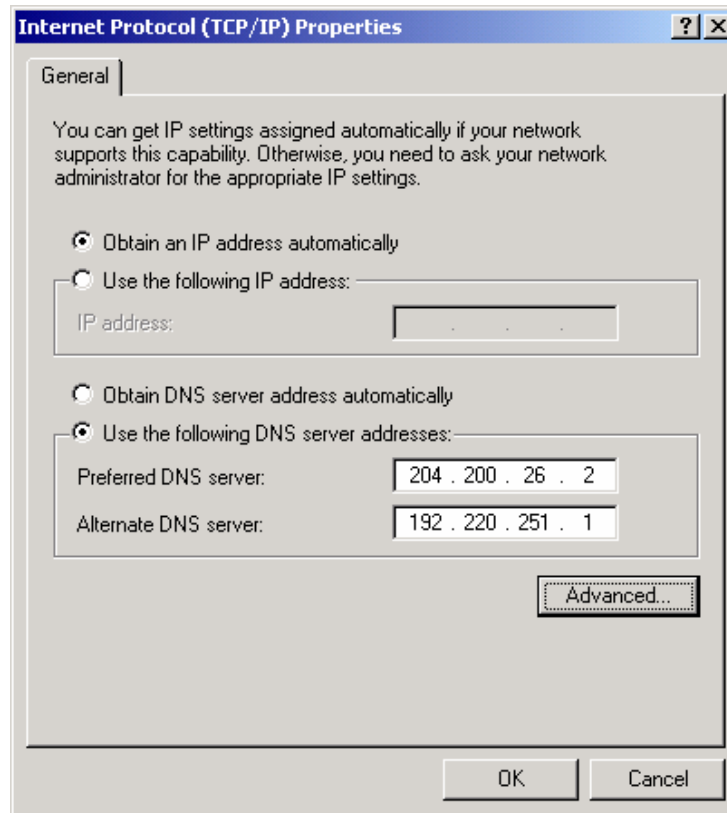
43) You will need to have “Internet Protocol (TCP/IP)” checked.

44) Highlight it by clicking on it.

45) Click on the “Properties” button.



46) The following screen should appear:



47) Leave the first pair of round dials selected at “Obtain an IP address automatically”.

48) The second pair of round dials should have “Use the following DNS server addresses:” selected.

49) Type the following for the “Preferred DNS server”: 204.200.26.2

50) Type the following for “Alternate DNS server”: 192.220.251.1

51) Click “OK” until all other windows are gone and try to connect by clicking on the “e” icon (Internet Explorer’s Icon)! * ☺

Thanks for choosing us as your Internet/Email provider.



— Technical Support —
(503) 472-9200 Ext. 102
support@OnlineNW.com

*In Windows 2000, a restart is not needed and everything should go successfully. Give us a call if you have any problems.